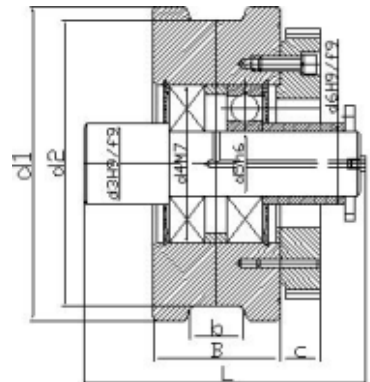
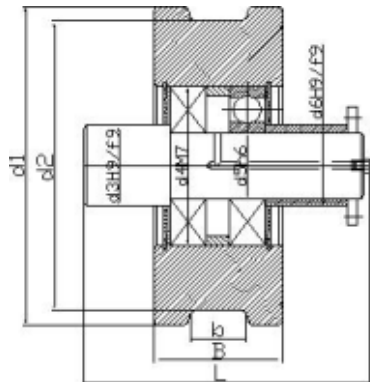
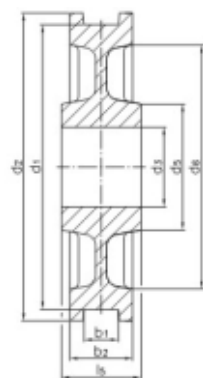
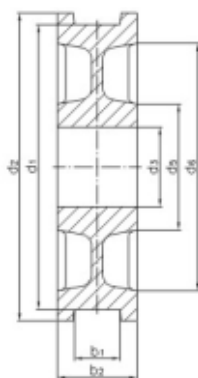


LD wheel



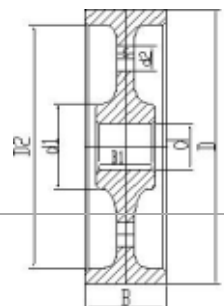
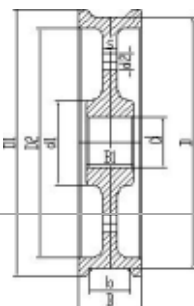
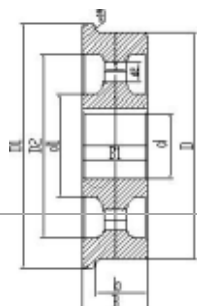
Model	d1	d2	d3	d4	d5	d6	B	b	L	c
170	Φ200	Φ170	Φ60	Φ90	Φ50	Φ60	85	60 70	215	27
270	Φ300	Φ270	Φ75	Φ150	Φ60	Φ75	120	70 90	269	38
370	Φ400	Φ370	Φ100	Φ190	Φ90	Φ100	120	70 90	285	38

Crane wheel with rib plate



form	d1	b1	b2	d2	d3	d5	d6	I5	unit weight
	h10				H7				^a [kg]
S	315	45-55	90	350	70-110	175	270	100	52
B		55-65	110		80-120	190			64
S	400	55-65	110	440	80-120	190	345	140	83
B		70-90	140		90-130	205			105
S	500	55-65	110	540	90-130	205	435	140	120
B		70-90	140		100-140	220			137
S	630	65-75	120	680	100-160	255	560	150	190
B		80-110	160		120-180	285		160	235
S	710	75-90	140	760	120-170	270	630	180	255
B		95-160	210		140-190	300		210	360
S	800	75-90	140	850	140-180	285	710	180	315
B		95-160	210		160-200	320		210	450
S	900	75-90	140	950	140-190	300	805	190	375
B		95-160	210		180-230	365		210	600
S	1000	75-90	140	1050	160-200	320	900	190	490
B		95-160	210		200-250	395		210	750

Single/Double/No flange wheel



D	D1	B	d	s	d1	d2	D2
160	190	85-100	45-55	20	70-85		≅120
200	230	85-100	60-80	20	95-125		≅160
250	280	85-110	70-90	25	110-140	20	≅210
315	355	95-130	100-110	30	160-190	25	≅265
350	380	95-130	100-110	30	160-190	25	≅295
400	440	100-150	110-120	35	175-205	35	≅340
500	540	105-200	120-140	40	190-220	40	≅430
630	680	120-210	140-170	45-60	220-285	50	≅560
710	760	150-210	150-190	50-65	240-300	55	≅630
800	850	150-210	160-200	50-70	255-320	60	≅710
900	950	150-210	170-230	55-75	270-365	65	≅800