

DRS wheel block size	Splined hub profile DIN 5480 ¹⁾ D	Dimensions in mm									
		a1	a2	a3	a4	a5	a6	a7	a8	a13	a14
			± 0,2	± 0,2	± 0,2	± 0,04	± 0,04	± 0,02	± 0,02	± 0,4	± 0,2
250	N 50 N 65	385	290	140	80	310	310	50	80	326	70
315	N 65 N 75	470	360	180	100	370	370	70	80	405	80
400	N 75 N 90	580	440	210	120	450	450	95	130	501	100
500	N90 N110	700	620	480	125	580	580	110	160	600	110

DRS wheel block size	Dimensions in mm												
	a15 ± 0,2	b1 max	b1 3	b2	b3	c1	d1 - 0,2	d2	d3 - 0,2	d5	d6	d7	d8
250	40	77	80	110	117,5	150	250	282	270	8 x M16	M12	-	34 F8
315	50	90	96	130	147	180	315	350	340	8xM16	M12	M20	40 F8
400	55	110	-	155	172	210	400	440	440	8xM20	M12	M20	31 H13
500	65	110	-	170	195	240	500	545	545	8xM20	M12	M20	31 H13

DRS wheel block size	Dimensions in mm								Max. weight of wheel block in kg			
	d9 F 8	d10	h1 3	h2	h3 3	h4 3	s min	x1	Travel wheel type			
									A	B	D	E
250	40	M16 20 deep	281	89	100	-	17,5	16,3	63	57	58	65
315	50	M20 20 deep	349,5	114	100	130	20	16,5	121	115	118	127
400	65	M24 20 deep	440	144	100	130	22,5	19	214	196	205	232
500	70	M24 25 deep	566	183	100	130	30	22,5	373	351	362	397

1) Note: See combinations in section 2.3.

2) Treads and flanges hardened, flanges without wear indicators

3) With reference to diameter d1

DRS wheel block dimensions

DRS wheel block size	Splined hub profile DIN 5480 1) D	Dimensions in mm										
		a1	a2	a4	a5 ± 0,02	a6 ± 0,1	a7 ± 0,1	a8 ± 0,02	a9	a10	a11	
112	N 30	190	145	45 ⁺⁴ ₋₇	145	145	30	40	40	30	24	
125	N 30 N 35	220	170	55 ⁺⁴ ₋₇	175	175	20	40	50	37	37,5	
160	N 35 N 45	275	220	55 ⁺³ ₋₅	220	220	25	55	54	47,5	20	
200	N 45 N 50	340	275	65 ⁺³ ₋₅	275	275	35	75	62	64	40	

DRS wheel block size	Dimensions in mm														
	a13	a14	a15	a16	a24	b1 max	b1 2)	b2	b3	c1	c2	c3	c4	d1 - 0,2	d2
112	160	40	28	15	-	60	62	80	36	96	51	70,5	-	112	132
125	184	50	24	18	-	60	62	80	33	98	52	73	52,5	125	150
160	-	-	-	-	-	65	67	89	33	110	59	84	-	160	188
200	-	-	-	-	56	67	75	101	36	130	69	93,3	-	200	230

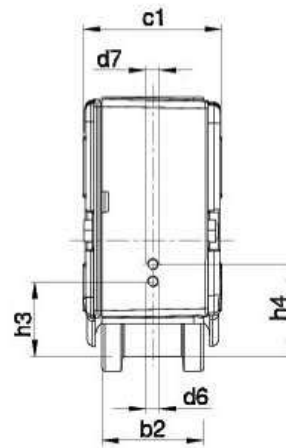
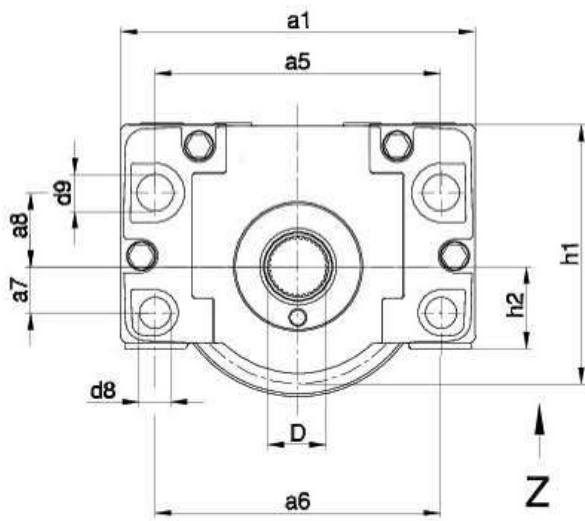
DRS wheel block size	Dimensions in mm												
	d3 - 0,2	d4	d5	d6	d8	d9 F 8	d10	d11	h1 3)	h2	h3 3)	s	
112	126	130	M12	M12	10,5	18,5	4,9x8,5 deep	M8	131	47	80	10	
125	145	140	M12	M12	13	21	4,8x5 deep	M8	147,5	53,5	100	10	
160	183	180	M16	M12	17	30	-	M10	187	70	100	12	
200	226	225	M16	M12	20	35	-	M10	238	90	100	18	

DRS wheel block size	Max. weight of wheel block in kg					
	Travel wheel type					
	A	B	C	D	E	F
112	7,4	6,6	5,3	7,1	8,1	7,8
125	9,9	8,7	6,3	9,3	11,5	8,4
160	18,3	16,1	17	17,2	20,1	15,1
200	35,7	32,5	23,6	34,1	41,6	29,2

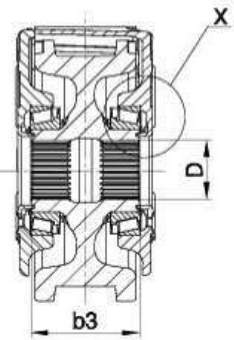
1) Note: See combinations in section 2.3.

2) Treads and flanges hardened, flanges without wear indicators

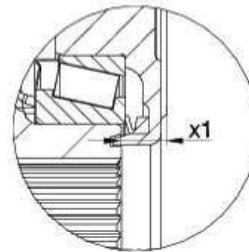
3) With reference to diameter d1



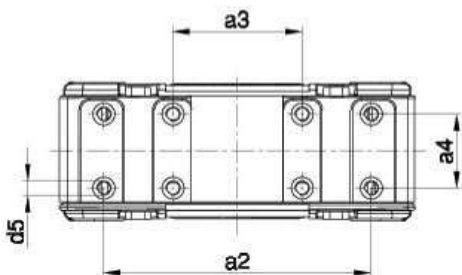
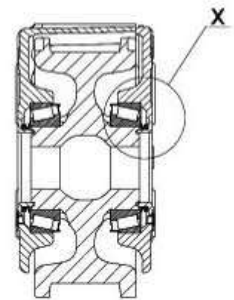
A/MA



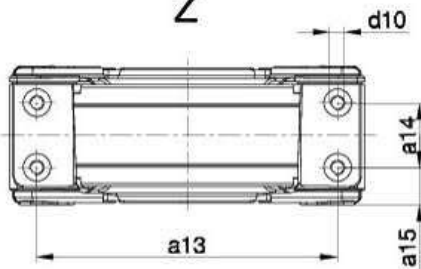
X



NA

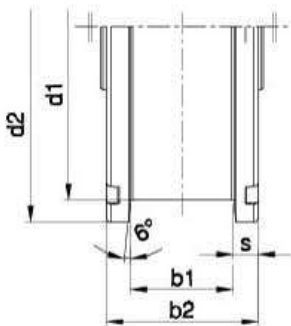


Z

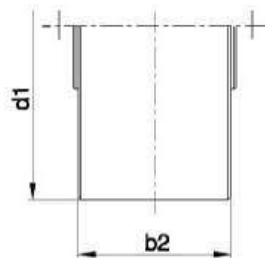


Travel wheel types

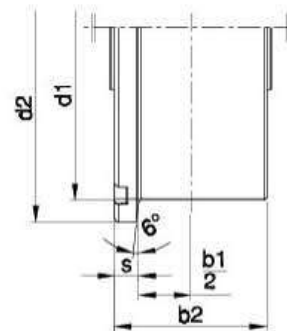
A



B



D



E

